



Caledonian

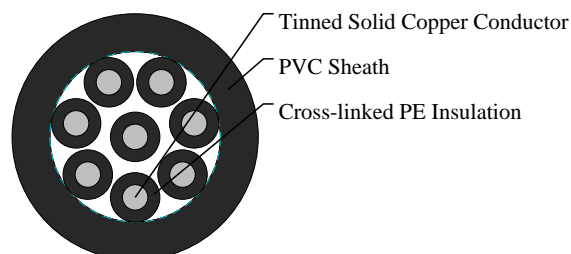
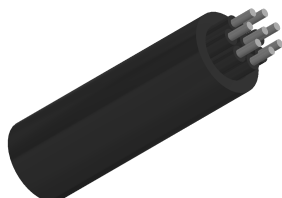
Railway Cables

www.caledonian-cables.com

marketing@caledonian-cables.com

SCG Local Control Cables

RS/SCG-075-2XY-8C6S



APPLICATIONS

The cables are designed as local control or power supply cables for trackside and between the rails equipments inside the equipment shelter.

STANDARDS

SNCF CT 466

VOLTAGE RATING

450/750V

CABLE CONSTRUCTION

Conductors: Class 1 tinned solid copper.

Insulation: Cross-linked black polyethylene (XLPE) insulation.

Sheath: PVC sheath, coloured black.

PHYSICAL AND THERMAL PROPERTIES

Minimum Bending Radius: 5xOD (static); 10xOD (dynamic)

Operating Temperature: -20°C to +90°C

DIMENSION AND PARAMETERS

No. of Cores	Conductor Size	Conductor Diameter	Nominal Diameter over Insulation	Nominal Sheath Thickness	Nom. Overall Diameter	Approx. Weight	max. conductor resistance
	mm ²	mm	mm	mm	mm	kg/km	Ω/km
8	6	2.76	5.4	4.1	26	940	3.11



Caledonian

Railway Cables

www.caledonian-cables.com

marketing@caledonian-cables.com



Fire Retardant
NF C32-070-2.2(ICI)
IEC 60332-3-2.4 EN 50266-2.4



Laid In Cable Tray



Rated voltage